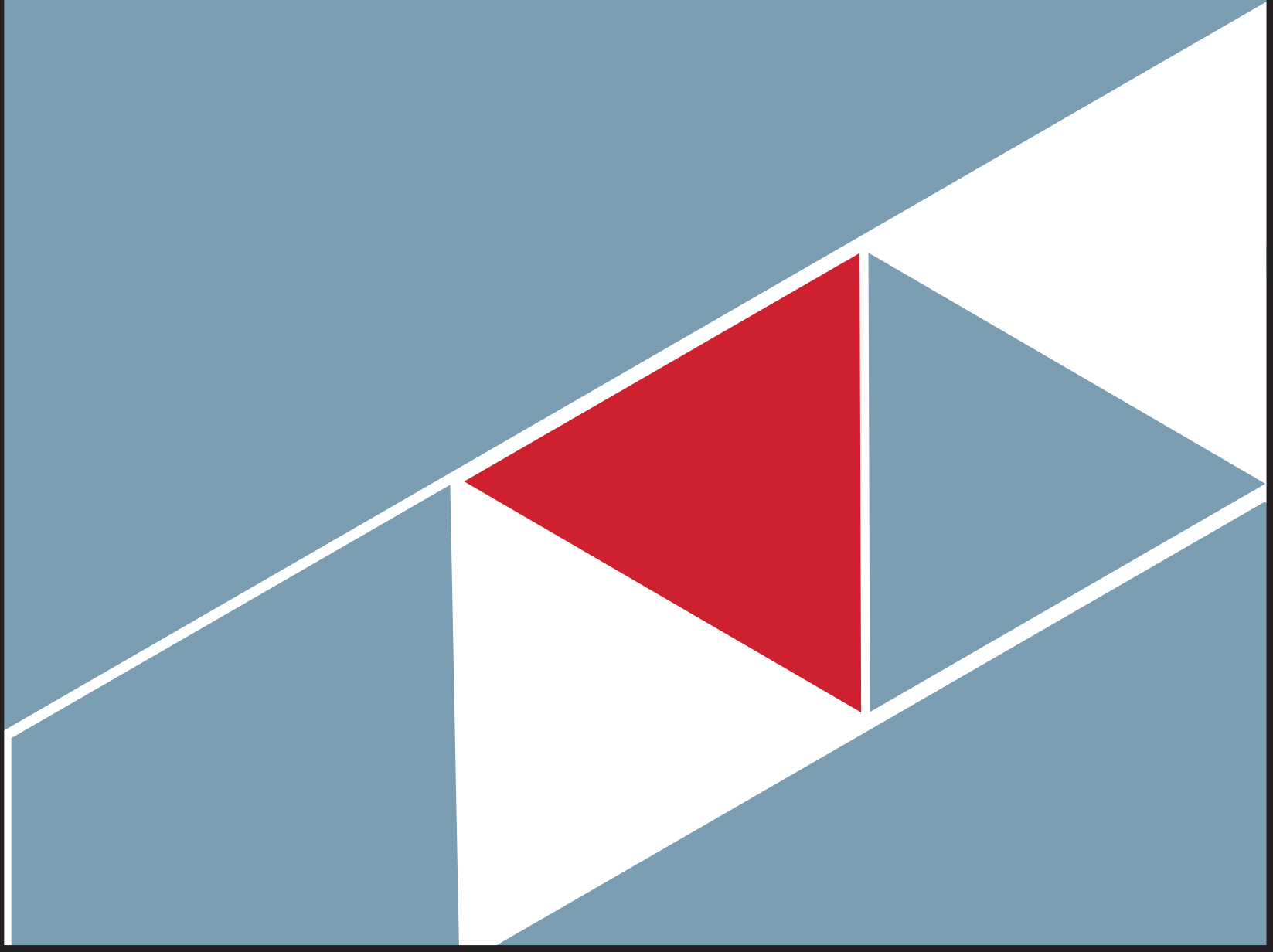




**The  
Community  
Chest**  
Since 1933

# Annual Report 2019



# TABLE OF CONTENTS

---

Letter from the Executive Director .....	3
Letter from the Board President .....	4
Mission and Vision.....	5
History of the Red Feather .....	5
Our Story .....	6
Board of Managers 2019 .....	8
What We Do .....	9
Our Impact .....	10
2018-2019 Grantees .....	11
Grant Recipients .....	12
Partnership for Healthy Eating Series .....	13
Professional Development Series .....	15
Scholarships .....	17
Events 2019 .....	19
Event Sponsors .....	22
Financials .....	23
Donors .....	24
Support The Community Chest .....	28
Keep in Touch .....	29

# LETTER FROM OUR EXECUTIVE DIRECTOR

---

Dear Friends,

As 2019 draws to a close The Community Chest is delighted to be reflecting on another great year making contributions to our community in so many ways.

We hosted several highly successful events where we celebrated the outstanding accomplishments of neighbors who demonstrated their leadership abilities by making important contributions to our communities. At our second annual women's leadership luncheon The Chest made awards to two highly accomplished high school students who demonstrated their dedication to helping others through their selfless activities.

At our annual Spring Gala a record number of attendees came to celebrate the accomplishments of Lori Stokes, Co-Host of Good Day NY, Vicky Sidrow, the recently retired CEO of Vantage Health System and Joe Parisi, CEO of Otterstedt Insurance.

We hosted a Professional Summit, held at Dwight Englewood School, where we brought together school leaders and nonprofit professionals to discuss ways that the two groups could work together to improve educational services for students. Several successful partnerships were highlighted to demonstrate how the varied skills sets could lead to creative programming for students.

Two nonprofits in our area made special requests to The Community Chest for funding assistance in 2019. Both had experienced major cuts in funding from The Englewood Public Schools. These cuts were unanticipated and would have resulted in the cancellation of important and much needed programming for elementary and middle school children attending the Englewood schools. The agencies felt that a small grant would help them to start the program year and would give them time to raise the balance of the needed funds. In both cases, the funds were successfully raised, and no programming was lost.

Once again, in its 86th year of operation, The Community Chest responded to the needs of local citizens. We provided funding to support programs in need of critical funding while also preparing people to take on new leadership roles to address future concerns.

The Community Chest grew its Board of Managers in 2019 by six people. Each of these people brought with him/her a new set of skills and talents to strengthen The Chest's capacity to serve the community. We look forward to future years of supporting the towns and people of eastern Bergen County and we thank those who have supported us in the past in this shared mission.



Shelly Wimpfheimer, DSW

# LETTER FROM OUR BOARD PRESIDENT

---

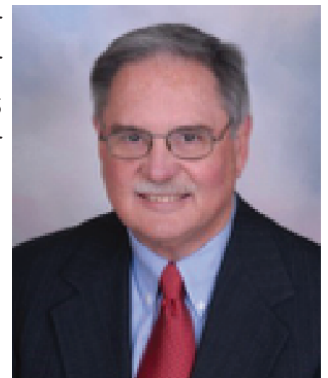
We had a very successful fundraising year, thanks to our loyal individual and business supporters and the great work by our Events Committee. We were able to raise more than \$288,000 from our annual appeal program and two major fundraising events. We held our annual Spring Gala at Montammy Golf Club with more than 200 attendees and we held our first annual Fall Fest at The Englewood Field Club. The fall event was unique – we had 13 local restaurants prepare special gourmet dishes, giving them an opportunity to showcase their great food and to enable them to be a part of the community spirit at the event. We also held two smaller fundraisers at Anthony's Coal Fired Pizza in Englewood. These events enabled us to reach a younger community to help increase our donor base.

We paid out \$159,000 in annual grants to 24 agencies to help them continue to do the good work they do. We also paid out \$33,500 as Emergency Grants to two agencies that lost large grants that funded critical programs. One grant was to Bergen Family Center to support startup expenses for The Zone, an after school program in Englewood for middle school students that was originally developed in the public school system, but lost funding. The second grant was for the Thurnauer Music Discovery Program that they run in the Englewood Public Schools and which also lost funding. Both of these requests came after our annual grant process was completed, but were critical initiatives for the community. A decision was made by our Board to support the requests to provide vital start-up funding. Both organizations were able to find additional funding to continue the programs after our support gave them a start.

I want to thank the Board of Managers of the Community Chest for the work they do to help us meet our mission. The hours that they spend raising funds, making allocation decisions and providing strategic leadership to the organization are critical to the success of the organization. I also want to recognize the leadership of our Executive Director – Dr. Shelly Wimpfheimer. She is the heartbeat of our organization. Through her dedicated work and vision our organization has become a major influence in the health and well-being of the community. She has enabled us to expand our activities beyond granting funds to our nonprofit community to playing a vital role in identifying and addressing community issues. We are a better organization as a result.

Best wishes for a great year.

Richard "Dick" Kennedy  
President, Board of Managers





# THE COMMUNITY CHEST...

---

## MISSION

---

"Lead initiatives and support nonprofits that make our communities stronger and benefit people in need in eastern Bergen County"

## VISION

---

Invest in eastern Bergen County communities by leading initiatives and supporting nonprofits so that every neighbor can lead their best life.

## HISTORY OF THE RED FEATHER

---



The red feather has been the symbol of The Community Chest since its founding. A Native American symbol. It stands for vitality, physical energy, strength, passion, power, and courage, all characteristics attributed to the work of the organization. Most Community Chest's throughout the world use the symbol to represent their work. Supporters of the Community Chest, particularly businesses, are urged to display the feather in their windows.

# OUR STORY

---

## History of The Community Chest

The Community Chest celebrated its 86<sup>th</sup> anniversary in 2019. The Depression was felt deeply by residents of Englewood who were suffering from serious economic hardship. Cornelius Kitchel, the Mayor, mobilized a group of citizens to explore options that could be adopted in the City to address the untenable conditions of the time. Residents were facing high unemployment; banks and local businesses were shuttered and numerous Englewood residents had lost their homes and livelihoods. Local government agencies and nonprofits experienced an increase in demand for services unlike anything they had encountered before. The town fathers and mothers knew that something had to be done to address these conditions.

The citizens group explored options that were being tried throughout the nation and settled upon one model called The Community Chest that was successfully operating in several locations in the country. They concluded that "Englewood had a wonderful community spirit and a large number of residents with the financial means and knowhow to serve, and that a Community Chest could conduct a money-raising campaign that would be successful." (from a 1933 letter from the Citizens Committee to the Mayor) Enthused by the possibilities of this solution, Mayor Kitchel selected one of the most well-respected residents and leaders of the town, Elizabeth Cutter Morrow, to lead the group. Mrs. Morrow, a resident of Englewood, a nationally renowned philanthropic leader and the president of Smith College at the time, worked with the mayor to select 33 exceptional residents, forming The Community Chest's first official Board of Managers. The first fundraising campaign was launched in September 1933. A volunteer corps of 450 neighbors walked throughout the town, asking neighbors to support those in need in Englewood. Although the times were very difficult, the determined fundraisers told the story of the neighbors' needs and raised a total of \$116,000, an impressive amount, especially in light of the serious financial problems of the time. This amount would be equal to over \$1 million if converted to today's dollar value.



*The Community Chest's first Board of Managers, including Elizabeth Cutter Morrow, seated, center*

The funds raised were granted to six local agencies: The Girl Scouts, Boy Scouts, Social Service Federation, the Citizens Employment Agency, The Salvation Army and Englewood Hospital. The idea was to free the agencies of their responsibility of fundraising so that they could dedicate their time to providing much needed services to local residents. In essence, they functioned as the "fundraising wing" of these organizations.

Since its founding, The Community Chest has raised funds for more than 100 local nonprofits. Two of the original agencies, Englewood Hospital and Bergen Family Center (formerly Social Services Federation) continue to be funded.

In the 1990s The Community Chest expanded its footprint to Englewood Cliffs and then in the early 2000s to include Tenafly. While the original board members were residents of Englewood, the addition of the two towns led to new board members being recruited from each of the new towns served. All board members were asked to serve as ambassadors of the agency and to continue to tell the story of The Chest's work. They were also asked to personally support the organization and to urge neighbors and friends to do the same.

The growth of the internet presented numerous opportunities and challenges for The Community Chest. Global access to the internet brought information about human needs and about charities throughout the world to a whole new universe of people, and competition for philanthropic dollars increased. The Chest increased its use of the internet to inform a larger group of donors about the growing needs of the local community. Local supporters were asked to give priority to supporting their neighbors.

A continuing advantage of The Community Chest has been its ability to tell the community about its long and trusted history and ask for support for an ever-expanding set of grantees that were serving local people in need. The number of agencies funded varied over the years, with as many as 25 agencies receiving support at any given time. Since its founding, The Chest has made nearly \$12 million in grants to local nonprofits.

In 2013, Dr. Shelly Wimpfheimer assumed the position of Executive Director of The Chest, bringing a changing mission and approach to serving the community. Various administrative practices were modified, The Chest's work was marketed more aggressively, and fundraising activities were expanded to meet the ever-expanding requests for funding. To address the growing number of requests The Chest now holds an Annual Spring fundraising event and a Fall event.

In 2016 the service area of The Chest was expanded once again to include the 12 towns north of Englewood, to a footprint now referred to as eastern Bergen County. The rationale for this change was that several of the agencies funded by The Chest were serving an increasing number of people from these towns. With this expansion the mission of The Chest was also modified to reflect a more community-wide perspective. It now reads that we aim to "Lead initiatives and support nonprofits that make our communities stronger and benefit people in need in eastern Bergen County."

The Community Chest has come a long way since its founding in 1933. While social conditions have changed over the years, and our communities are very different than they were 86 years ago, our commitment to our community has not wavered. We continue to be committed to our goal of "neighbors helping neighbors."

# BOARD OF MANAGERS

---

## Community Chest Board of Managers 2019

Richard Kennedy  
Mike Benedict  
Barbara Strauss  
Amie Aburustum  
Robert Reinemann

President  
Vice President  
Vice President  
Secretary  
Treasurer

Debra Albanese  
Edward Aversa, DMD  
Annette Corbin  
Tamara Francis  
Martin Huguley  
Marla Isacksonn

Trevor Jadoo, Esq.  
Jasmine Jaswal  
Tammy Mager  
Nick Prastos  
Melanie Simon  
Franci Steinberg

Executive Director  
Shelly Wimpfheimer

# WHAT WE DO

---



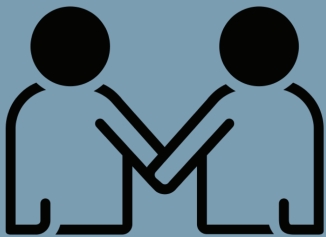
Support Community Building



Give Grants



Foster Collaborations



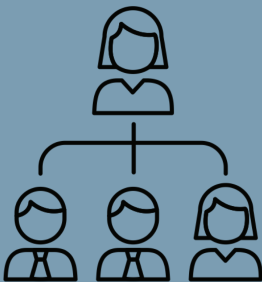
Encourage Peer Mentorship



Share Resources



Provide Professional Development



Encourage and Promote Leadership



Give Scholarships



Promote Philanthropy

# OUR IMPACT

---

The Community Chest is committed to leading community efforts to improve lives in eastern Bergen County. The Chest has been providing funding to local agencies and nonprofits for nearly a century. The Community Chest also develops collaborative action plans with community partners and identifies and provide solutions for community issues with local influencers. We lead on key issues by:

- Funding agencies and nonprofits to assist with providing vital services
- Fostering collaborations between nonprofit agencies, government, corporations, and other community partners
- Assisting existing agencies with expansion of services for key issues
- Strengthening agencies by offering professional development, teaching best practices, mentoring leaders, and providing issue-specific training

These bold efforts will help us achieve a future in which people living in eastern Bergen County live lives free from hunger, hardship, and ignorance, while enjoying health, safety, education, and new opportunities.

# 2019-2020 GRANTEES

## ADLER APHASIA CENTER

A therapeutic program for people with aphasia, a communication disorder that affects 40% of all stroke survivors. The grant will provide operational funds for the therapeutic services for 10 individuals from the Community Chest's service area.

## ARTWORKS- The Naomi Cohain Foundation

Funds will be used to provide partial support for the Surprise/Supplies Program offered at Englewood Hospital for seriously ill children and their siblings. The program provides toys, games and art supplies to children confined to their hospital rooms.

## BERGEN FAMILY CENTER

Funds will be divided between the Adult Day Care (ADC) Program and HIPPIY (Home Instruction for Parents of Preschool Youth). The ADC program is an arts and cultural program for seniors and pre-school children.

## BERGEN PERFORMING ARTS CENTER

Funds will expand their Beyond bergenPAC Outreach Program to focus on the importance of health and wellness through the performing arts. Different classes will be offered in the Englewood, Tenafly and Dumont schools for one hour per week for 7 weeks.

## BERGEN VOLUNTEER CENTER

Funds will be used to provide targeted services (primarily recruitment and training of volunteers) to northeastern Bergen County and to ensure a pipeline of knowledgeable civic leaders to volunteer and serve on boards.

## BERGEN VOLUNTEER MEDICAL INITIATIVE

Funding will help support free medical care for 250 working, low income uninsured residents from Englewood and surrounding towns.

## CENTER FOR FOOD ACTION

Funds will support the new Dinner4Seniors Program, a pilot program to alleviate hunger in the targeted population and relieve some of the financial burden of preparing healthy meals.

## THE CENTER FOR HOPE AND SAFETY

Funding will provide approximately 25% of the salary of the women's shelter's Emergency Overnight Counselor.

## ENGLEWOOD HEALTH

The funds will support a program serving high risk 9th graders at Dwight Morrow High School. It will include the screening and identification of students with obesity and pre-diabetes, provide education and awareness about healthy eating and teach behavior modification strategies to address unhealthy eating habits.

## FLAT ROCK BROOK NATURE ASSOCIATION

Funds will be used for general operating expenses for the Association's Environmental Education programs.

## FRIENDS OF WRIGHT ARENA

Helps to increase the utilization of the John T. Wright Arena by offering a 10-week ice-skating program to 40 children for 2 consecutive sessions, serving 80 children in total.

## GIRL SCOUTS OF NORTHERN NJ

Funds will support Girl Scout memberships for 75 girls from Englewood and to offset the costs of program supplies for a six week LEAD program focusing on STEM.

## DR. JOHN GRIECO SCHOLARSHIP FUND

These funds provide scholarships for students attending Dwight Morrow High School and The Academies at Englewood to assist with expenses associated with college preparation and admission.

## JCC THURNAUER SCHOOL OF MUSIC

Funds provide choral uniforms and competition fees for scholarship recipients attending the Music Discovery Program in the Englewood Public Schools.

## JFCS of NORTHERN NJ

Funds will support general operating costs including expanded programs at Englewood Library and Tenafly Senior Center. In 2019 programming will expand to Alpine, Norwood, Cresskill and Closter, all towns within The Chest's service area. Mental Health services, with a sliding free scale, offered in various languages (English, Spanish, French, Hebrew and Farsi) will be offered.

## METRO COMMUNITY CENTER

Funds to be used for a 4-year long mentoring and afterschool program for 9th and 10th graders.

## OFFICE OF CONCERN FOOD PANTRY

Funds will be used to purchase additional food options for the Nutrition Plus Program including meats, eggs, dairy, fresh fruits and vegetables.

## PLANNED PARENTHOOD

Funds will subsidize preventative health care to low income and uninsured clients at Bergen County centers.

## SOUTHEAST SENIOR CENTER FOR INDEPENDENT LIVING

Funds will help pay for the cost of activities programs, medical services and building repairs.

## SPECTRUM FOR LIVING DEVELOPMENT CORPORATION

Funds for respite and recreation activities for unserved and underserved adults with physical and development disabilities and their families living in eastern Bergen County.

## ST. PAUL'S CHOIR SCHOOL

Funds provide partial support of a nonsectarian afterschool program that offers professional choral training, voice and piano lessons, music theory, leadership development and mentoring to children and teenagers.

## TENAFLY NATURE CENTER

Funds will help provide environmental awareness programs to schools, community groups as well as families and individuals, including a subsidized day camp program during the summer and school vacations.

## VANTAGE HEALTH SYSTEM

Funds will be used toward the salaries of staff providing mental health counseling, addiction treatment and housing services to people diagnosed with mental illness.

## WEST SIDE INFANT AND TEEN PARENTING PROGRAM

Funds will be used to extend day care to 2 ½ to 5 year olds and to fund the Life Skills/Parenting program with the addition of a part time Education Coordinator.

## WOMEN'S RIGHTS INFORMATION CENTER

Funds will be used toward the salaries of 2 staff key to the operation of agency programs.

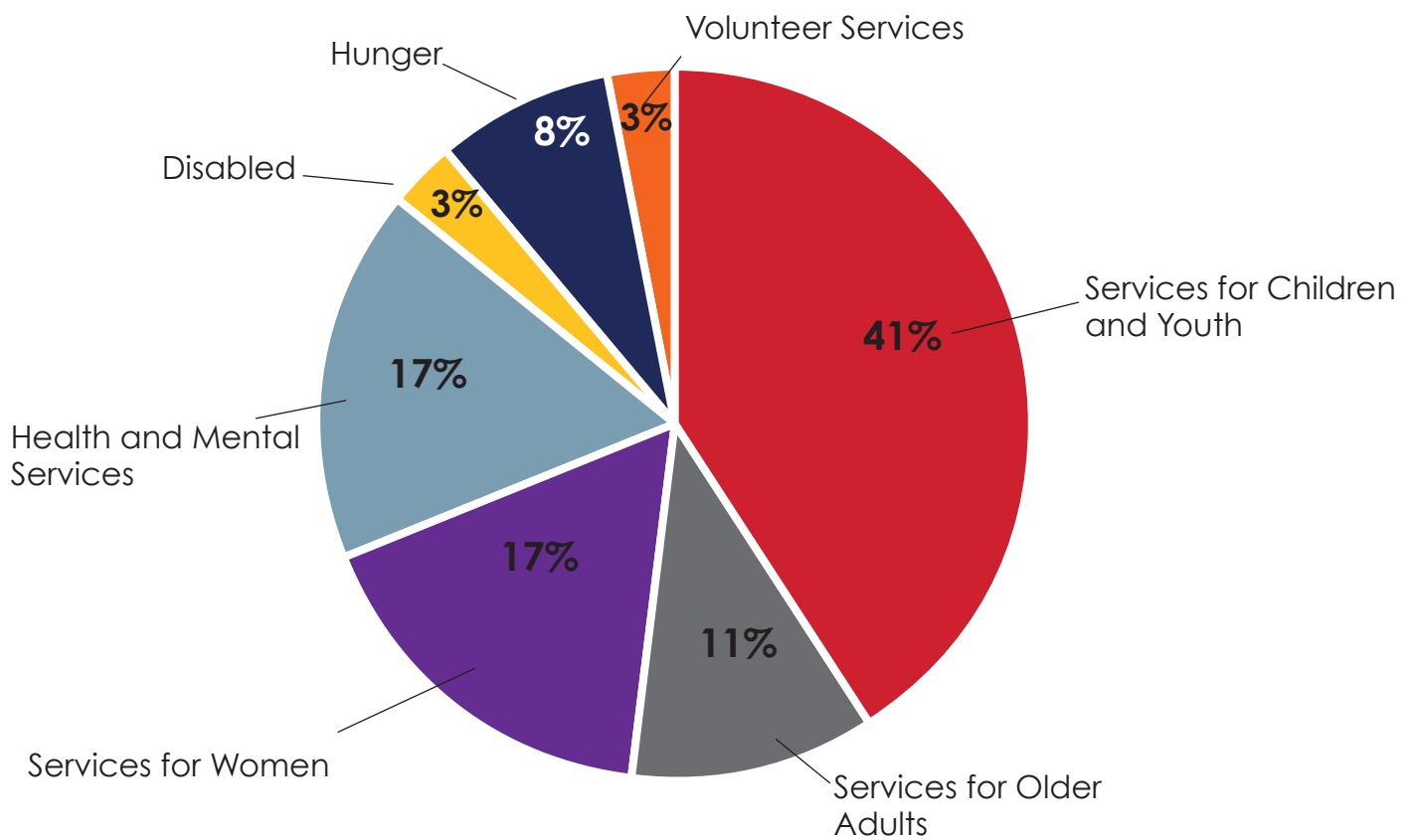
## YWCA OF BERGEN COUNTY

Part of the funds will be used for aquatics scholarships for local children and another part will be used toward supporting fitness activities in area senior centers.

# GRANT RECIPIENTS

---

## Neighbors Helping Neighbors for More than 85 years 2019-2020 Allocations



Children	41%	\$ 78,500.00
Aging/Seniors	11%	\$ 20,850.00
Women	17%	\$ 34,000.00
Health	17%	\$ 34,000.00
Disabled	3%	\$ 5,000.00
Hunger	8%	\$ 15,000.00
Volunteer	3%	\$ 5,000.00

Total Grant Distribution	\$ 192,350.00
--------------------------	---------------



# PARTNERSHIP FOR HEALTHY EATING SERIES

---



The Partnership for Healthy Eating was developed in response to the major obesity and diabetes epidemic that is sweeping across America and our local community.

A group of local organizations, including Englewood Health, The Community Chest, Center for Food Action, the Office of Concern, Age-Friendly Englewood, The Englewood Health Department, the North Hudson Clinic, and various Englewood-based churches decided to work together to create a healthy eating program in an effort to combat the situation.

**Goal:** To combat rising trends in obesity and diabetes by improving the eating habits and in turn the overall health of the safety net population of Englewood.

**Objectives:**

- Introduce the group to healthy foods and educate them about nutritious eating
- Educate the group on useful strategies/tips for shopping and planning around meals and snacks
- Provide residents with a variety of healthy and affordable menus.

Support for the program was donated by TD Bank Foundation and a variety of other individuals who made contributions to purchase food and other supplies.

The program attracted a large group of volunteers to help with its implementation. People from the Volunteer Center of Bergen County's "Redefining Retirement Program" and several local banks and other businesses made the smooth delivery of the program possible.

The program was held at local churches in Englewood. Thanks to the following congregations for hosting the events:

First Presbyterian Church	January 31, 2019
Galilee United Methodist Church	March 28, 2019
Church of God of Prophecy	April 11, 2019
First United Methodist Church	May 15, 2019
Community Baptist Church	June 13, 2019
First Baptist Church	November 20, 2019

The Community Chest thanks to the following banks and other businesses for their support: Lakeland Bank, M&T Bank, T.D. Bank, Investors Bank, Valley Bank, and La Promenade.



Images from Partnership for Healthy Eating events, 2019

# PROFESSIONAL DEVELOPMENT SERIES

---

The Community Chest, in collaboration with the Rutgers University School of Social Work's Continuing Education Program, offers a minimum of 4 trainings per year for the supervisory and management staff of local nonprofit agencies. The following lists the professional development classes being offered by The Community Chest throughout 2019.

January 8, 2019

## **Be Compelling – Perfect the Pitch**

Presenter: Sandra Bodin-Lerner

Description: The training focused on presentation pitches to perspective funders. The interactive program involved the group in discussion and actual presentation including presentation preparation and delivery

February 12, 2019

## **“An Introduction to Planned Giving for Nonprofits - Offered in Partnership with Regent Atlantic Wealth Managers”**

Presenter: James R. Sonneborn

Description: This workshop discussed planning giving from the view of the nonprofit and the donor. Common planned giving strategies were discussed. Attention was given to integrating financial and estate planning with planned giving. Participants learned what nonprofits should be doing for planned giving success.

June 10, 2019

## **“Board Members as Ambassadors”**

Presenter: Joan Garry

Description: The workshop was intended for those looking to ignite their board members to increase their outreach and network with the hope of motivating people to increase their footprint and to sustain motivation beyond their Gala or event.



September 19, 20

**Mental Health** – 2 days

Presenters:

David Drapkin, MSW – Englewood Health

Stephanie Hartman – Mental Health First Aid Training Coordinator, Bergen County Dept. of Health Services, Division of Mental Health

Michelle Hart-Loughlin, Director of Mental Health Services, Bergen County Dept. of Health

Description: This national public education program discussed how to identify, understand and respond to signs of mental illness and substance abuse disorders. This training discussed the skills needed to reach out and provide initial support to someone who may be developing a mental health or substance abuse problem and help connect them to appropriate care

October 23, 2019

**The Opioid Crisis in NJ: Current Trends and Evidence Based Treatment Options**

Presenter: Glenn Duncan, LPC, LCADC, CCS, ACS –

Rutgers University Department of Continuing Education

Description: In this workshop, the latest developments and trends regarding natural opiates, semi-synthetic opioids and synthetic opioids were discussed.



*Professional Development Series class held at Flat Rock Brook Nature Center*

# SCHOLARSHIPS

---

The Community Chest is committed to encouraging young people to advance their educations and serve their communities through service and volunteerism

May 16, 2019

## **“Celebrating the Elizabeths – a Women’s Leadership and Awards Luncheon, 2019 Young Women’s Leadership Award (Scholarships)**

Inspired by Elizabeth Cutter Morrow, the first president of The Community Chest, as well as Elisabeth Morrow Morgan, her daughter and the co-founder of the Elisabeth Morrow School, and Elizabeth Cady Stanton, an esteemed suffragette who resided in Tenafly, The Chest established a leadership award to recognize young women leaders in our community.

Applications are made available to female seniors and juniors from all public and private high schools in eastern Bergen County who demonstrate strong ability to lead through their various community and school activities. A request is made of school guidance counselors and other community leaders to assist with identifying candidates for these awards. School staff is also asked to provide recommendations to accompany the completed applications.

Winners for 2019 were Billie Dove Singer and Alexa Sarah Miller, both graduates of Tenafly High School.

*“It was an honor to receive this award from the eastern Bergen County Community Chest and speaking at the luncheon because I felt supported and inspired by so many community leaders. Having this award money was helpful to pay for books which can be very expensive, and it gave me confidence to continue focusing on social justice as well as leadership in my new community.”*

*Alexa Miller, 2019 Award recipient*



*Billie Singer, left, Alexa Miller, right*

June, 2019

### **Dr. John Grieco Scholarship Award**

The Dr. John Grieco Scholarship Fund was created in memory of Englewood's Superintendent of Schools, Dr. John Grieco. For 17 years now, Englewood's high school students and staff have organized events to raise scholarship money for students who attend Dwight Morrow High School and the Academies@Englewood. Those funds have been augmented by generous Community Chest grants each year, enabling Grieco Scholarship to award \$26,000 to students in all four grades. To date, Grieco Scholarship has awarded more than \$250,000 to nearly 300 high school graduates.

Grieco Scholarship teaches Englewood public school students the importance of giving back to their community, taking care of their own, and keeping it fun every step of the way.



*Students at Academies@Englewood receiving their awards with Ms. Judy Aronson*

# EVENTS

---

The Community Chest is committed to leading community efforts to improve lives in eastern Bergen County. The Chest has been providing funding to local agencies and nonprofits for nearly a century. The Community Chest also develops collaborative action plans with community partners and identifies and provide solutions for community issues with local influencers. We lead on key issues by:

- Funding agencies and nonprofits to assist with providing vital services
- Fostering collaborations between nonprofit agencies, government, corporations, and other community partners
- Assisting existing agencies with expansion of services for key issues
- Strengthening agencies by offering professional development, teaching best practices, mentoring leaders, and providing issue-specific training

These bold efforts will help us achieve a future in which people living in eastern Bergen County live lives free from hunger, hardship, and ignorance, while enjoying health, safety, education, and new opportunities.

March 22, 2019

## **“Activating Community Partnerships for Education”**

This meeting was designed to inform citizens, public officials, school administrators, nonprofit representatives, faith-based organizations, business owners and community leaders about the importance of building partnerships to strengthen K-12 educational outcomes in Eastern Bergen County.

April 13, 2019

## **“Birthing In Communities of Color”**

Led by Jay Wilson and Dr. Natasha Chinn

Offered in partnership with the YWCA of Bergen County and Englewood Health.



April 25, 2019

**Community Chest's Annual Spring Gala  
"Make a Difference In Your Community"**

Montammy Golf Club, Alpine NJ.

Our Annual Spring Gala attracted over 200 attendees at the beautiful Montammy Golf Club in Alpine, NJ. Guest Auctioneer and Antiques Road Appraiser Nick Dawes were in attendance to introduce a variety of incredible live auction items included with the silent and raffle items on display raising considerable money for the Chest's annual campaign. Once again, Young People's



Chorus @ Thurnauer returned for a magical musical performance.

The Community Champion Award was presented to Vicki Sidrow, President and CEO Vantage Health System



The Public Spirit Award was presented to Lori Stokes, Co- Host Good Day NY on Fox 5 NY



The Philanthropist Award was presented to Joe Parisi, CEO, The Otterstedt Insurance Agency



May 16, 2019

**The Second Annual Woman's Leadership Luncheon and Scholarship Award Presentation**

The Community Chest recognizes women's contributions to philanthropy, education and society in the region at the Women's Leadership Luncheon and Scholarship Ceremony at Elisabeth Morrow School in Englewood.

The event honored:

Molly Craig-Barry, Englewood Board of Education

Tami Luchow: Changemaker and activist

Dr. Arthorine Walker: Special Education Teacher/Dwight Morrow School



Scholarships were awarded to two High School seniors. Details are provided in the Scholarship Section (page 17) of this report.

*Molly Craig-Barry, Tami Luchow, Arthorine Walker, honorees, with Shelly Wimpfheimer*



October 17, 2019

### Fall Fest at The Community Chest

The second major fundraiser of the year, our Oktoberfest, was held at the Englewood Field Club. More than 100 guests attended this highly successful party and fundraiser. This was a truly festive autumn celebration with friends and neighbors featuring a new, creative way to gather to dine; a feast prepared by 13 local restaurants featured their special gourmet item. This included tastes of main and side dishes an assortment of shots of craft liquors and fabulous homemade desserts all were served and enjoyed by all.

This was the second year having the creative idea of the "Wine Pull" where ticket purchasers could pull "anonymous covered" wine bottles of various different price levels for one price and take the chance of winning a bottle of far greater value. We thank the sponsors and donors as well as the attendees for supporting this great event.

The honoree of the event was Judy Aronson, receiving the Community Advocate Award. Entertainment was provided by the teens from Bergen PAC Performing Arts program.



On Wednesday Oct. 23, 2019, the Community Chest of Englewood recognized Judy Aronson for the Community Advocate Award to recognize her generous work in the Englewood community. The annual Fall Fest was held at the Englewood Field Club.

The three-hour event honored Ms. Aronson as a student advocate and caring educator who created the Dr. John Grieco Scholarship Fund, Diversity Club, Englewood Idol and other events that bridge Dwight Morrow High School and the Academics @ Englewood students, and the community. Approximately 160 teachers, alumni and community members were present.

"I was honored to be there, not just for the Community Chest, but for our school and for Ms. Aronson to be recognized for all that she does," French teacher Amanda Mauder said.

**"The best part was seeing Ms. Aronson recognized."**

November 21, 2019

### Reception for 2019 Donors

At the beginning of the 2019 holiday season, the board members of The Community Chest held a reception for their donors in appreciation of their support.

# EVENT SPONSORS

---

*These generous sponsors supported us at the Fall Fest, Spring Event and the Women's Luncheon.  
They make an enormous impact on our overall financial well-being.*

AIG  
Anonymous  
Antin Ehrlich & Epstein LLP  
Judy and Mark Aronson  
Bank of NJ  
Bank of America/Phil Ball Team  
Beacon Theater  
Chelsea Lyn Beck  
Bergen PAC  
Berkley Luxury Group  
BMW of Tenafly  
Boyd Richards  
Paul and Barbara Brensilber  
Broadway Kitchens and Bath  
Angie Castella  
Citi Private Bank  
Citi Bank  
Connect One Bank  
Decotech  
Elisabeth Morrow School  
Richard Engel &  
Swati-Rao-Engel  
Englewood Health  
Farmers of Salem  
Floor & Décor  
Fort Lee Racquet Club  
Gemini Restoration  
GJEM Division  
GNY Insurance Companies  
Judy Goldberg  
Hanover Insurance  
Harrison Rand  
ISU  
Jaguar Land Rover Englewood/  
A Penske Automotive Dealership  
The Kamson Corporation

Richard and Shawn Kennedy  
Kiwanis Club of Englewood  
Joe & Judy Klyde  
Andrew Kovar  
Lakeland Bank  
Louise Schwartz  
Nationwide  
NY Giants  
Alfiero & Lucia Palestroni  
Foundation  
PNC Bank  
Providence Mutual  
PSE&G  
Raphael Family  
Raymond James  
Romer Debbas  
RSK Associates  
Sharon Kinsman Salmon  
Dr. Jason Schepis  
Kathy & Jim Scott  
Selective NJ Region  
Sisterhood of Temple Sinai  
Adam and Franci Steinberg  
Shop & Shop  
Barbara Strauss and Tom Manolio  
Tapestry  
TD Bank  
UBS Bianco Daly Group  
Valley National Bank  
Vergona Crane  
Visions Federal Credit Union  
Prestige Volvo  
Westy's Storage  
Robert Wilkens Insurance Agency  
Loren & Jennifer Wimpfheimer  
Wolfgang's Auto Repair

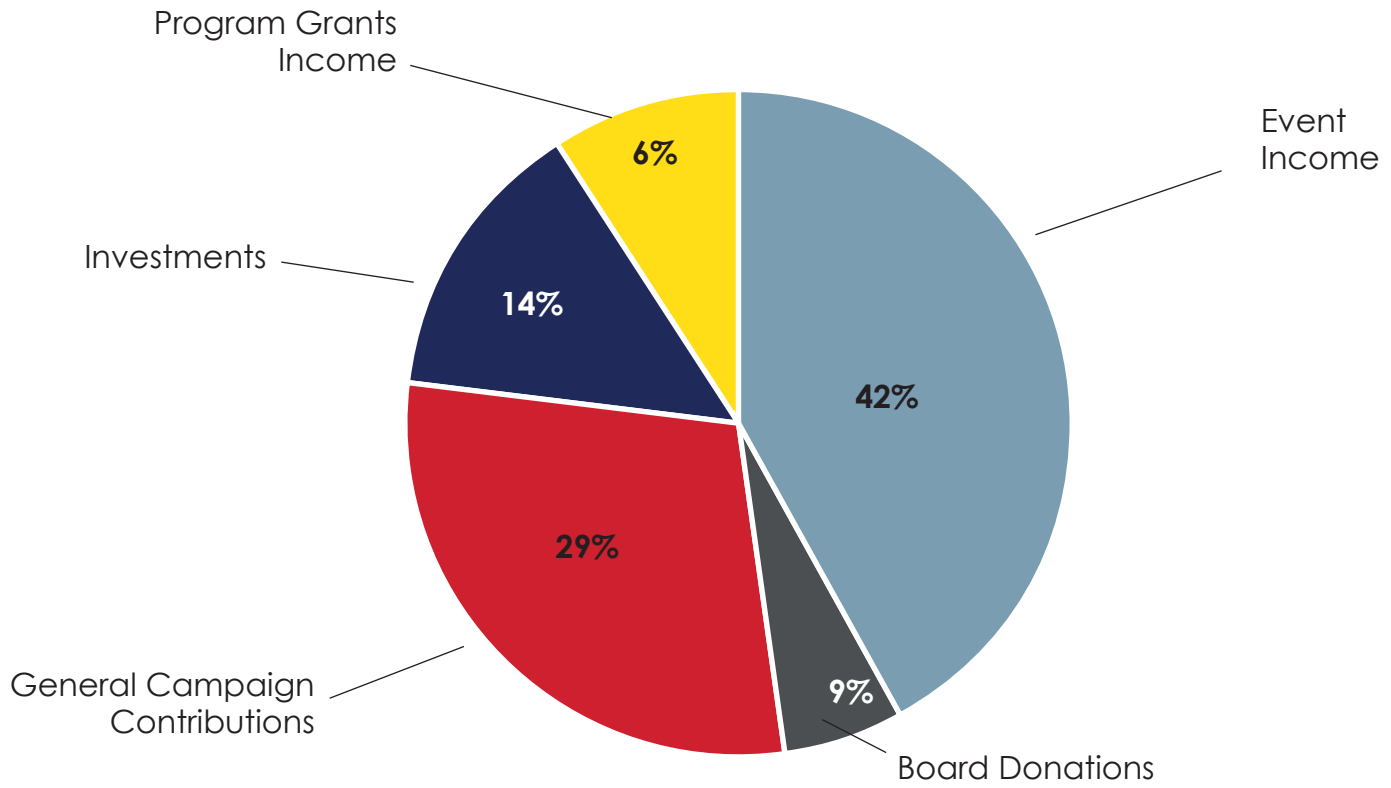
Woman's Rights Information  
Center  
York International  
Susan & Daniel Zausner

## **Fall Fest Restaurants/Sponsors**

Alementary  
Anthony's Coal Fired Pizza  
Aumm Aumm Pizzeria and  
Wine Bar  
Black Dirt Distillery  
Blue Moon Mexican Café  
Chez Cheese  
Fresh Eats  
Gary's Wine & Marketplace  
Giovanni's Bicycle Club  
"IGC Hospitality  
Alementary"  
It's Greek to Me  
Kings Food Markets  
La Promenade  
Locale Ristorante  
Noches De Plaza  
Spring44 Distilling  
Sweet Hospitality Group  
Syros Taverna  
Tequila Partida  
TJ's Southern Gourmet  
Trattorio Carpaccio  
April Uram  
Franci Steinberg

# FINANCIALS

---



<ul style="list-style-type: none"> <li><span style="display: inline-block; width: 15px; height: 15px; background-color: #333; margin-right: 5px;"></span> Board Donations</li> <li><span style="display: inline-block; width: 15px; height: 15px; background-color: #8090a0; margin-right: 5px;"></span> Event Income:</li> <li style="padding-left: 25px;">Registration</li> <li style="padding-left: 25px;">Sponsorship</li> <li style="padding-left: 25px;">General Event Donations</li> <li><span style="display: inline-block; width: 15px; height: 15px; background-color: #ffcc00; margin-right: 5px;"></span> Program Grants Income</li> <li><span style="display: inline-block; width: 15px; height: 15px; background-color: #cc0000; margin-right: 5px;"></span> General Campaign Contributions</li> <li><span style="display: inline-block; width: 15px; height: 15px; background-color: #000066; margin-right: 5px;"></span> Investments</li> </ul>	<ul style="list-style-type: none"> <li>9%</li> <li>42%</li> <li></li> <li></li> <li></li> <li>6%</li> <li>29%</li> <li>14%</li> </ul>	<ul style="list-style-type: none"> <li>\$ 20,913.00</li> <li></li> <li>\$ 25,304.00</li> <li>\$ 71,909.00</li> <li>\$ 42,871.00</li> <li>\$ 13,260.00</li> <li>\$ 114,572.00</li> <li>\$ 28,258.00</li> </ul>
---	---	---

<b>Total Income</b>	<b>\$ 317,087.00</b>
---------------------	----------------------

# THANK YOU DO OUR DONORS

*Many thanks to our generous 2019 donors .*

## **Benefactors** **\$5,000 +**

Alfiero & Lucia Palestroni Foundation  
GNY Insurance Companies  
Gordon, Suzan  
Greenberg, Sondra J  
Kamson Corporation  
Kaplen Foundation  
Kennedy, Richard and Shawn  
Otterstedt Insurance  
Russell, Jeffrey and Rosemary  
Strauss, Barbara and Tom Manolio  
Swain, Edward and Caryl  
Wilkins, John  
Wimpfheimer, Justin and Shelly

## **Golden Feather** **\$1,000.00-\$4,999.99**

Adler, Karen & Alan  
Albanese, Debra  
Allport, Rev. Bill and Carrie  
Antin, Ehrlich & Epstein, LLP  
Aronson, Mark and Judy  
Bank Of NJ  
Bianco, Glenn  
BMW Of Tenafly  
Boyd Richards Parker and Colonelli  
Brensilber, Paul and Barbara  
Chaifetz, Larry and Renee  
Citi Private Bank  
Clifford, Kenneth and Lisa  
ConnectOne Bank  
Corbin, Peter & Annette  
Davis, Norman and Ann  
Diaz, Armando & Dawn  
Dorf, Sanford  
Engel, Richard  
Fish, Frederick S & Merle  
Geisenheimer, Carol  
Jaguar Land Rover Englewood  
Jones, Graham and Gay

Katz, Jeff and Karen  
Katz, Steven A  
Kesslen, Mark and Phyllis  
Klyde, Joe & Judy  
Knip Fund  
Lakeland Bank  
Lee, Margot and Al Gromulat  
Leibman, Felicia  
Mann Family Foundation  
McCarthy, Joseph and Karlan  
Metzger, Mark and Beth  
Meyers, Keith & Maria Devita  
Michaud, Ric and Liz  
Milne, George H and Carolyn  
Mitzman, Muriel  
Mueller, Bernadette M.  
Noel, Xavier  
Perskie, Flora  
Pitkin, Louise S  
PSE&G  
Raimondi, Josephine  
Schwartz, Louise  
Scott, James and Kathleen  
Shannon, Michael J  
Silberstein, Alan and Carol  
Simpson, Daniel P. and Linda  
Sobiloff, Peter and Imelda  
TD Bank  
Temple Sinai of Bergen County  
Uram, Alex & April  
Vel, Carla  
Visions Federal Credit Union  
VRH Construction  
Walter & Peggy Jones Fund  
Wharton Foundation  
Williams, Charles and Pamela  
Wimpfheimer, Loren and Jennifer  
Zoellner, Victoria

## **Guardians** **\$500.00-\$999.99**

A Michael Taylor Realty Corp.  
Aburustum, Nadeem & Amie  
Alpern, Jerome and Enid  
Carthens, Janice A  
Dillon, Sean  
Favor Senior Home Care, LLC  
Ava Rattigan  
Frank, Elizabeth B.  
Go Fund Me  
Johnston, William and Patricia  
Klausner, Neal & Susan  
Lakeland Bank  
Miller, Karen and Scott  
Mortman, Jacqueline and John  
Pierre Saint-Louis  
Murphy, Michael and Jane  
Nabar, Santosh  
NJ Manufacturers Insurance  
Company  
Norton, Jonathan and Lynn  
O'Neil, Patrick  
Rallo, Amanda  
Raymond James & Associates  
Reinemann, Robert and Mary  
Ritter, Mary and Wolfgang  
Sarna, Mark and Anita  
Schoen, Charlotte Bennett  
Scott, Les and Elizabeth  
Shapiro Family Foundation  
Shirvan Family Foundation, Inc.  
Simon, Melanie  
Steinberg, Franci and Adam  
Temple Sinai Sisterhood  
Tenafly Fire Department  
Tom & Sharon Salmon  
Toolen, Jami  
Visions Credit Union  
Zimick Electrical  
Zingler, Barry and Melanie

**Angels**  
**\$250.00-\$499.99**

Americas Charities  
Archantou, Helen  
Ball Family Foundation Fund  
Bhathal, Tarlochan and  
Inderpal  
Blumenthal, Michael and  
Deborah  
Brenner, Jerome and Nicole  
Brenner, Ronald & Nereyda  
Century 21  
Chertoff, Harvey & Gayle  
Clare, Jamie  
Cole, James R  
Corsini, Liz & Josh Hyman  
CSI Group, The  
Decker, Horst and Judith  
Dunn, James  
Edmonds, Shirley  
Esser, Darren & Stacy  
Farmer, Michael & Alice  
Fort Lee Racquet Club - Howie  
Mann  
Gal, Jonathan & Stephanie  
Genn, Manny & Myra  
Gordon Meth Kiwanis  
Griffith, David  
Guttman, Jacqueline  
Harris, Dr. and Mrs. Michael  
Janssen, Heysa  
Johnston, Patricia  
Kate Liebhold  
Klein, Richard and Joan  
Leeman, Steven and Fran  
Libien, Matt & Evy  
Linda Reiter & Jeff Chinman  
Maron, David and Judie  
Nelson, Edward and Gloria  
Ostfeld, Scott and Maxfield,  
Jennifer  
Owens Group, The  
Picarillo, Jimmy and Patti  
Pranitis, David and Leonora  
Prestige Volvo Cars Of  
Englewood  
Salzer, Dr. Richard and Linda  
Scherl, Burton A

Sekas Law  
Silberstein, Stuart and Kathleen  
Skowronski, Ed and Ellen  
Sultan, Mark and Joy  
Tedesco, Jayanne  
Twombly, Alice J  
Urdang, Elliot and Ella  
Volin, Sylvia  
Waskas, Alesya  
Wiessner, Stephen  
Wilson, John  
York International Agency Inc., LLC  
Zausner, Daniel and Susan  
Zimick, Louis

**Neighbors**  
**\$.01-\$249.99**

Aach, Ruth  
Abdah, Soindos  
Aboudi, Wilson and Gloria  
Abreu, Kristyn and Emily  
Altschul, Michael and Jackie  
Anderson, Christopher and Adrienne  
Arams, Ron  
Aronson, Herman and Judith  
Basilo, Thomas & Pat  
Beaumont, Natalie  
Becker, Martin & Lieberman, Rita  
Benedict, Michael  
Bennett, Robert and Gertrude  
Berger, Beatrice P  
Bern, Doug  
Bernstein, Robert and Carol  
Bianco-Daly Group Financial  
Services Inc, The  
Bigliani, Louis and Kremetz,  
Dr. Annie  
Blinder Yehuda and Roni  
Bodian, Jerome  
Bohlander, Robert F  
Borsi, Emilia  
Boudrot, Melvin and Jane  
Boylan, Edward and Ruth  
Bream, David  
Brennan, Conor  
Brooks, Queen Esther  
Brummer, Michael  
Brunner, Cecile S.

Burke, Ainsley and Carla  
Byrne, Rosemary C  
Calise, Bill and Michele  
Cantelmo, Patricia  
Carmellini, Virginia M  
Carson, Elizabeth R  
Cauthen, Rick and Susan  
Chin, Richard  
Cioffi, Joseph and Doris  
Cioffi, Michael and Amelia  
Cirilli, John  
Coates, Laird  
Cobb, Charles  
Cohen, Lorraine  
Cohen, Rachel  
Coleman, Cathay  
Coscia, Carol A  
Cox, Dorothy  
Czechowicz, Marie D  
Dauber, Edward and Cheryl  
Davidson, Franklin and Carol  
Demetrakis, James and Joyce  
Deutch, Nicole  
Deutsch, Ruth  
Downes, Katherine Y  
Dr. John Grieco Scholarship Fund  
Drinane, Eleanor Lee  
Engelhardt, Ronald  
Epstein, Charles I  
Evron, Roni and Christine  
Faley, Mary A  
Favaro, Joseph and Yvonne  
Fein, Martin and Eth, Hilary  
Fennell, Margaret  
Ferguson, Everett and Laraine  
Ferretti, August and Susan  
Fink, Seth and Leslie  
Finkel, Mark and Valerie  
Flat Rock Brook Nature Association  
Fleisher, Anne and Jerry  
Fordice, Alison  
Frankel, Vicki  
Fried, Sharon  
Friedberg, Eugene A  
Friends of Valerie Huttle For Assembly  
Freund, Dr. and Mrs. Bruce  
Frohlinger, Margery  
Galant, Herbert and Fern



Galluzzi, Don and Margery	Koven, Martha	Nachman, Ralph and Nancy
Garrison, Laura	Kowalski, Linda & Ludwig	Nacht, Irmari
Gates, Gloria and Thomas	Krinitz, Mike and Sylvia	Nalebuff, Rita
Gavin, John and Paula	Landzberg, Brian and Kim	Network For Good
Gellman, Lance and Jane	LaRose, Patricia	Niewood, Beryl
George, William and Evangeline	Lee, Constance E	O'Connor, Jeanne E
Ginsberg, Allen and Roz	Lee, Karen C	O'Dwyer, Susan
Ginsburg, Howard B	Leff, Richard and Koch, Jeffrey	O'Leary, Brian S
Gittleman, Marilyn	Lehrer, Joel and Nancy	Olson, Phillip and Rosita
Glassman, Jon and Heather	Leonessa, John and Rose Marie	Oppenheim, Allen and Marian
Glickman, Loren and Lisa	Levine, Dr. and Mrs. Raphael K.	Pantuck, Eugene and Carol
Gold, Dr. and Mrs. Steven	Levine, Howard and Rhoda	Passow, Michael and Shirley
Goldman, Barry and Laurie	Levy, Enrique and Sydell	Paston, Kenneth
Goldman, Edward and Sherri	Levy, Marcia L	Paul and Christina DelBalso
Goldstein, Arthur & Lynn Norton	Liaty, Barbara	Pilar, Jeronima
Goolsarran, Jacqueline	Lieberman, Herman and Roslyn	Plonsky, Frances
Greenberg, Richard and Helen	Light, Mitchell and Karen	Polin, Richard and Helene
Gribben, William and Harriet	Lindsay, Robert and Marilyn	Pollock, Linda
Hadden, Mr. & Mrs. Eddie	Lissner, Mr. and Mrs. Michael	Pomeranz, Bruce and Miriam
Haines, Elizabeth Leeds	Litvin, David and Rebecca	Ponzio, Stephen
Hall, Brian	Lizzi, Mary M	Popper, Charles
Halman, Douglas and Kim	Loffredo, Carla S	Powell, Roslyn
Halverstam, Elizabeth	Lomasky, Brian	Prager, Kenneth and Jeannie
Hamlin, Linda	Lupow, Susan L	Proietti, Frank and Susan
Hanson, Stephen	Macy, Susan B	Pruitt, Henry and Tracey
Helft, William R & Tenenbaum, Susan	Maiden, Rosalind T	Quentzel, David and Dorothy
Henick, David and Arlene	Malarcher, Willy and Patricia	Rached, Oliver
Herko, Wladzia	Malka, Jack and Susan	Reichman, Dr. & Mrs. Lee B
Hoexter, Rolf and Corinne	Maloney, William J	Reifman, Maurice and Toby
Holman, Adele	Margolin, Jerome and Barbara	Richert, Kirsten
Horan, Janet	Marton, Sheila & Herbert	Rochman, Mindy
Joel and Karen Budin	Matthews, David G	Rodriguez, Mauricio
Joslin, Janet	Mauder, Amanda	Rodriguez, Richard
Kalter, Sigmund and Geraldine	McEwen, Nancy A	Rosen, Mr. and Mrs. Norman H.
Karp, Ellen	McKee, Janine B	Rosen, Neal and Diane
Kasoff, Linda	McKenna, George	Rosen, Norman and Joan
Katzman, Mr. Merle H. & Charna	McLaughlin, Jennifer	Rothman, Howard and Brenda H.
Keen, Fred and Whitney	Merlino, John	Rotter, Jeffrey and Julie
Kelley, Yoshiko	Merlino, Kim	Rubenstein, Arthur and Denise
Kest, Sheldon and Lynda	Meyerson, Elaine	Rudbart, Cindy
Khambatta, Hoshang J	Miller, Dolores E	Rustin, Peter and Janie
Kirsh, Felice R	Miller, Jan	Ryan, Patricia
Kitzinger, Cynthia Z	Mitchel, Yale and Sharon Molinas, M.D.	Sachar, David and Joanna
Klatskin, Lynne	Molnar, Thomas and Francesca	Sacks, Robert C
Kornheiser, Martin and Ruth	Motta, Denice	Salvatore, Hanna and Joe
Koslow, Wolf and Lauren	Muhlfelder, Ronald & Annet	Salvatore, Nicholas
Kovar, Andrew and Elyse	Murphy, Joe and Maryann	Scherl, Saul and Jodi
		Schermer, Anton and Sheryl

Schonberg, Nancy  
Schwartz, Barilynne  
Schwartz, Barry and Debbi  
Schwartz, Jerold and Herva  
Seitel, Rosemary  
Setrakian, Berge and Vera  
Sharma, Sansar and Janet  
Sherry, Randy and Michelle  
Shulman, Jerry and Ginny  
Sidrow, Vicki  
Siegel, David and We-Li-Pai  
Siegel, Mollie  
Silber, Robert and Karen  
Silberthau, Inge  
Silvers, Jonathan and Ann  
Silvers, Stacey and Haley, Beth  
Simon, Sonja  
Singleton, Lee and Marsha  
Skinner, Wilma J  
Skog, Don and Beryl  
Small, Bernard E  
Snowman, Alfred and Jo Ellen  
Spitzley, Ray and Kelly  
Stein, Aaron and Dr. Francine  
Siegel Stein  
Stenzel, Kurt and Carolyn  
Still, Dan and Lydia  
Stott, Rachel  
Strobel, Esther  
Strom, Leroy and Joyce  
Strongwater, Marcia  
Sturm, George and Johanna  
Surrey, Roxana A  
Sussman, Barry and Barbara  
Szegda, Eva  
Takahashi, Koichi and Haruyo  
Tobias, Geoffrey and Lynne  
Toolen, Lois  
Trautman, Mark and Sifuentes,  
Ben  
Truefit201 .  
Tsadok, Shlomo and Debra  
Turen, Betty Jan  
Turitz, Aaron and Shirley

Ungar, Ari  
Vitale, Nellie R  
Warms, Jon and Liz  
Warren, Nicole  
Wechsler, Richard and Joan  
Weinberger, Leonard  
Weingast, Joshua and Fran  
Weinstein, Joel and Judy  
Weisbart, Gilbert and Deanne  
Weiss, William and Marion  
Wepner, Gabriella and Stephen  
Wheeler, Pierce and Charlotte W. Phillips  
Whitman, Paul and Mary  
Willinger, Jonathan and Caaron  
Wohlfarth, Daniel and Jill  
Yang, Emily  
Yanowitz, Jennifer  
Zabar, Roselle K  
Zimick, Naum & Marylou  
Zinna, Mark

# SUPPORTING THE COMMUNITY CHEST

---

Donors may make contributions to The Community Chest in a variety of ways:

Donate through mail:

Please mail a check to our office:

The Community Chest  
122 South Van Brunt Street, 2nd Floor  
Englewood, NJ 07631

Donate online

Please make online contributions via our website:

<https://thecommunitychestebc.org/>

Gifts of stocks or bonds are welcome. Donors wishing to contribute in this way should call the Executive Director to receive information for making these donations.

Several large organizations have matching gifts programs. Donors are encouraged to consult with their employers about the availability of a matching gift program and how to participate. This is an ideal way to maximize contributions.

Thank you in advance for your generous contributions.



## STAY IN TOUCH WITH US

---

122 S. Van Brunt Street, 2nd Floor  
Englewood, NJ 07631

(201) 568-7474

[shelly@communitychestofenglewood.org](mailto:shelly@communitychestofenglewood.org)

[www.facebook.com/communitychestofenglewood](http://www.facebook.com/communitychestofenglewood)

If you would like to be on our email list, please  
contact Shelly (email listed above) to get  
updates on events all year long



Report prepared by:

Natalia Gomez - MSW Intern, Rutgers School of Social Work

Franci Steinberg - Board Member, Community Chest Board of Managers

Shelly Wimpfheimer, DSW - Executive Director